

## Monitoring the Progress of Battling Invasive Species in the Pacific

Tuesday 15 July 2025

### SPREP Invasive Species Team



# Building and institutionalising country capacity

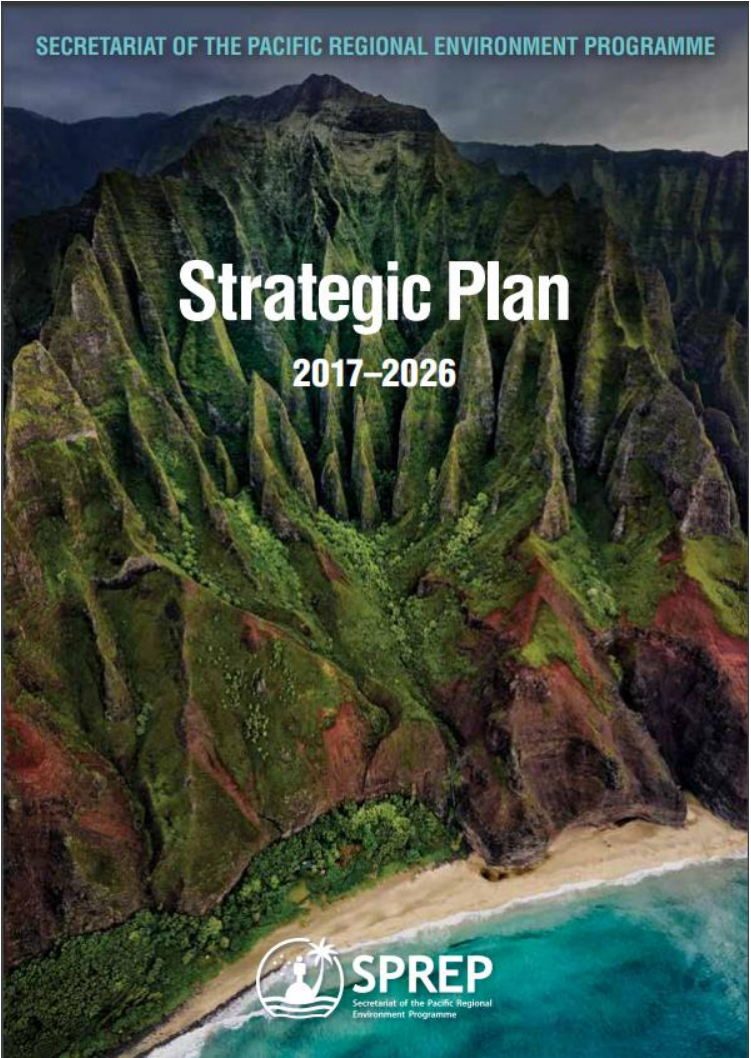


# Pacific Battler's



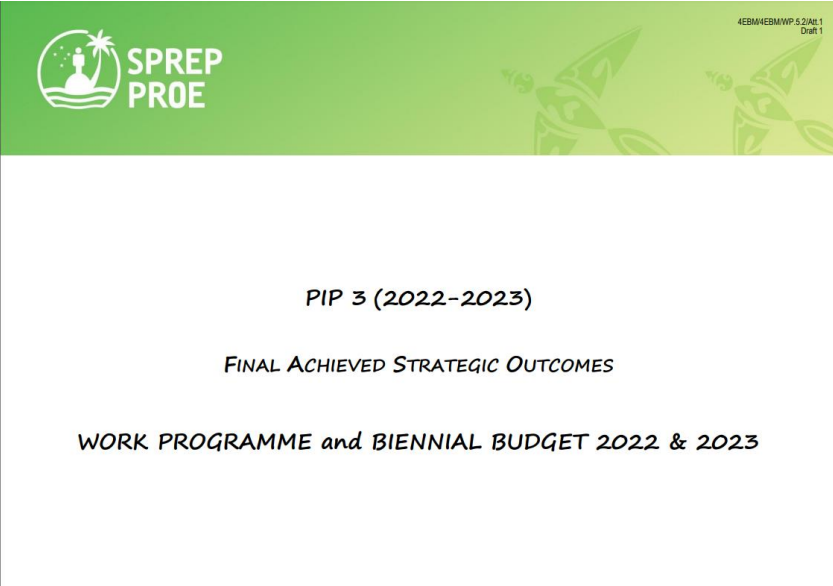
# Regional goal 2: Pacific people benefit from healthy and resilient island and ocean ecosystems

## 2.4 Significantly reduce the socioeconomic and ecological impact of invasive species on land and water ecosystems and control or eradicate priority species



**TABLE 1: IMPLEMENTATION AND MONITORING THE STRATEGIC PLAN (10 YEAR)**

FREQUENCY	GOVERNANCE ACTIONS	REPORTING AND DECISION MAKING
Five Yearly	Independent Mid-term review	Considered and approved at the SPREP Meeting (SM)
	Final Term Evaluation	Considered and approved at the SM
Biennial	Annual Work Programme and Budget (AWPB), and indicative AWPB for alternate year.	Approved at the SM
	Performance Implementation Plan	Prepared by DG. Reviewed and approved at the SM
Annual	Audit Committee Report	Prepared by AC. Considered and approved at SM
	Troika	Report to Members on key priority issues meetings with the Executive
Alternate Annual (Non-SM Year)	Risk Plan and Audit Committee	Prepared by DG, Internal Auditor, and Audit Committee. Audit findings reported to the SM
	AWPB plus indicative AWPB for alternate year	Prepared by Directors. Approved by the SM
Semi-Annual	High Level Progress Updates	Prepared by SMT. Reported to the Troika. Disseminated to Members

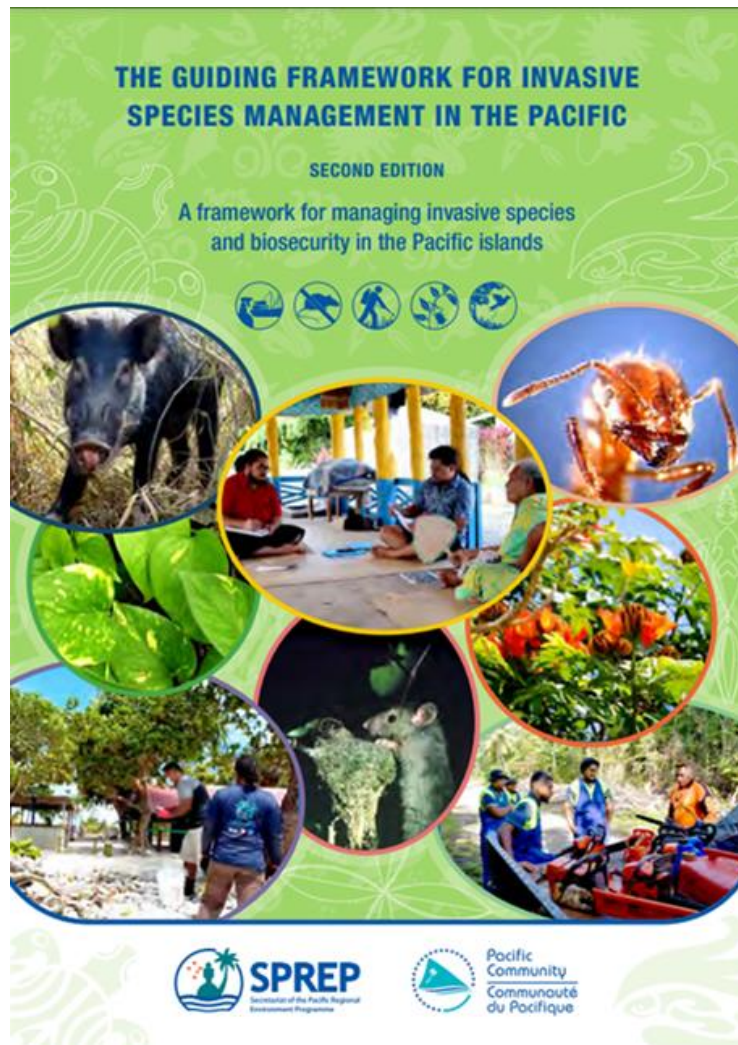


# Our Performance Implementation Plan (PIP) Indicators

Updated Indicator(s) (2017-2026)	Updated Target 2026	Baseline 2017	PIP 1 2018-2019	PIP 2 2020-2021	PIP 3 2022-2023	PIP 4 2024-2025	PIP 5 2026
RO2.4.1: Risk of new socio-economic-environmental impacts lowered due to active specific Early Detection-Rapid Response (EDDR) Plans in 16 PICTs	21 PICTs	8	8	12	16 16	21	21
RO2.4.2: Island and coastal ecosystems more resilient due to invasive vertebrae species being eradicated on 73 islands.	100 Islands	60 Islands	60 Islands	70 Islands	73 Islands 133	91 Islands	100 Islands
RO2.4.4 Active invasive plant biological control programmes evident in at least 9 PICTS in lowering the impact of widespread weeds.	9 PICTs	2 PICTs	2 PICTs	7 PICTs	9 PICTs 15	11 PICTs	9 PICTs
RO2.4.5 At least 73 priority ecological sites restored ecosystem function through managing multiple invasive species taxa.	100 priority ecological sites	61 priority ecological sites	61 priority ecological sites	67 priority ecological sites	73 priority ecological sites 103	91 priority ecological sites	100 priority ecological sites

We are well ahead of our regional target indicators

# Our strategy to deliver the regional programme



## THEMATIC AREAS

### Foundations

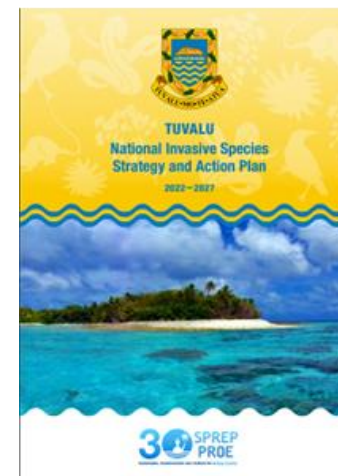
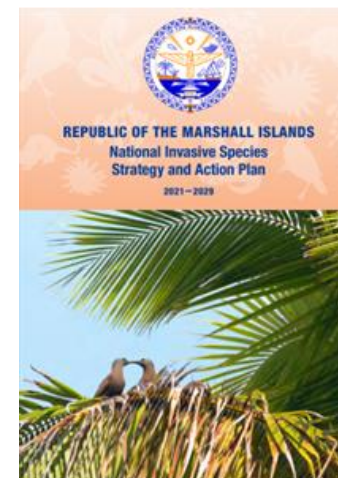
- A1. Generating Support and Changed Behaviour** — Raising awareness of and concern about the impacts of invasive species on biodiversity, the economy, livelihoods, human health, and socio-cultural values and mobilising support for action to manage and reduce impacts.
- A2. Building Capacity** — Developing institutions, skills, infrastructure, technical support, information management, linkages, networks, and exchanges required to effectively manage invasive species and biosecurity.
- A3. Legislation, Regulation, Policy, and Protocols** — Ensuring that appropriate legislation, regulations, policies, protocols, and procedures are in place and operating, to underpin the effective management of invasive species.

### Problem Definition, Prioritisation, and Decision-making

- B1. Baseline, Monitoring, and Evaluating Change** — Establishing a baseline of information on the present status and distribution of invasive species in the Pacific and a programme for detecting change, including the establishment of new high-risk invasive species, range changes, and emerging impacts due to existing and/or new invasive species.
- B2. Prioritisation** — Establishing and implementing effective systems for assessing risk and prioritising biosecurity and invasive species for prevention, management, and planning.
- B3. Research on Priorities** — Understanding priority invasive species including species biology, impacts, and vectors, and developing effective management techniques.

### Management Action

- C1. Biosecurity** — Preventing the spread of invasive species across international or internal borders.
- C2. Management of Established Invasive Species** — Reducing or eliminating the impacts of established invasive species, by eradication, containment, exclusion, or population reduction through physical, chemical, or biological control.
- C3. Restoration** — Supporting site-led management to restore ecological function by reducing the impacts of invasive species to a predetermined state whereby natural assets and values are secured.



# Our strategy to deliver the regional programme



David Moverley  
Invasive Species Adviser



Josef Pini  
Invasive Species Officer



## THEMATIC AREAS



### Foundations

- A1. Generating Support and Changed Behaviour** — Raising awareness of and concern about the impacts of invasive species on biodiversity, the economy, livelihoods, human health, and socio-cultural values and mobilising support for action to manage and reduce impacts.
- A2. Building Capacity** — Developing institutions, skills, infrastructure, technical support, information management, linkages, networks, and exchanges required to effectively manage invasive species and biosecurity.
- A3. Legislation, Regulation, Policy, and Protocols** — Ensuring that appropriate legislation, regulations, policies, protocols, and procedures are in place and operating, to underpin the effective management of invasive species.

### Problem Definition, Prioritisation, and Decision-making

- B1. Baseline, Monitoring, and Evaluating Change** — Establishing a baseline of information on the present status and distribution of invasive species in the Pacific and a programme for detecting change, including the establishment of new high-risk invasive species, range changes, and emerging impacts due to existing and/or new invasive species.
- B2. Prioritisation** — Establishing and implementing effective systems for assessing risk and prioritising biosecurity and invasive species for prevention, management, and planning.
- B3. Research on Priorities** — Understanding priority invasive species including species biology, impacts, and vectors, and developing effective management techniques.

### Management Action

- C1. Biosecurity** — Preventing the spread of invasive species across international or internal borders.
- C2. Management of Established Invasive Species** — Reducing or eliminating the impacts of established invasive species, by eradication, containment, exclusion, or population reduction through physical, chemical, or biological control.
- C3. Restoration** — Supporting site-led management to restore ecological function by reducing the impacts of invasive species to a predetermined state whereby natural assets and values are secured.



SPREP & Regional Invasive Species Project (RISP)

Strengthening national and regional capacities to reduce the impact of invasive alien species on globally significant biodiversity in the Pacific. The project aims to reduce the impact of invasive alien species (IAS) by increasing knowledge and awareness of IAS in the Pacific, and by supporting the development of national and regional IAS management and control strategies and regional IAS management plans.

Invasive alien species are better managed to strengthen and restore ecosystem services, increase resilience, and protect biodiversity

Pacific Territories Regional Project for Sustainable Ecosystem Management

Supporting the development of national and regional IAS management and control strategies and regional IAS management plans.



Invasive Species Project Associate



Invasive Species Project Associate



PRISMSS Consultant Event Coordinator



PRISMSS Business System Consultant - Data Entry Support



Invasive Species Component Manager, PROTEGE

**PRISMSS**  
Pacific Regional Invasive Species  
Management Support Service



**PRISMSS**  
**Powered by**

UK International Development  
New Zealand Ministry of Foreign Affairs & Trade  
SPREP PROE  
GEF  
UN environment programme



## PRISMSS REGIONAL PROGRAMMES



### Protect Our Islands

"National and inter-island biosecurity and EDRR"



### Predator Free Pacific

"Removal of invasive mammalian predators from Islands"



### War On Weeds

"Management of high priority weeds"



### Natural Enemies - Natural Solutions

"Biological control of widespread weeds"



### Resilient Ecosystems - Resilient Communities

"Priority area ecological restoration"



### Protect Our Marine Areas

"Preventing marine invasive species from spreading to priority marine areas"

eworks | Desired Outcomes | People

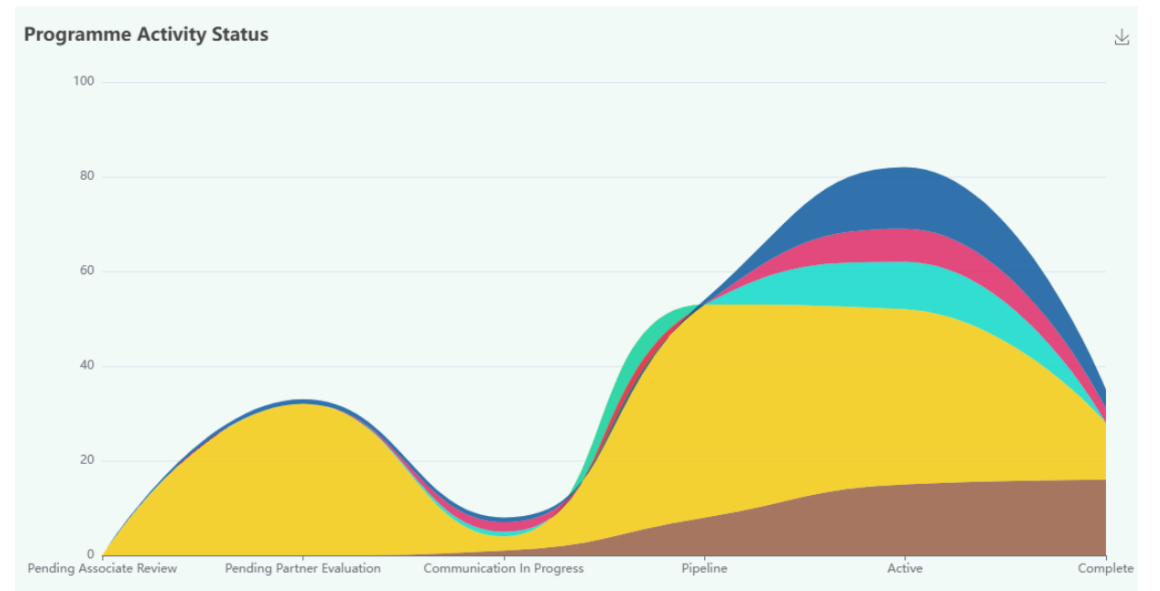
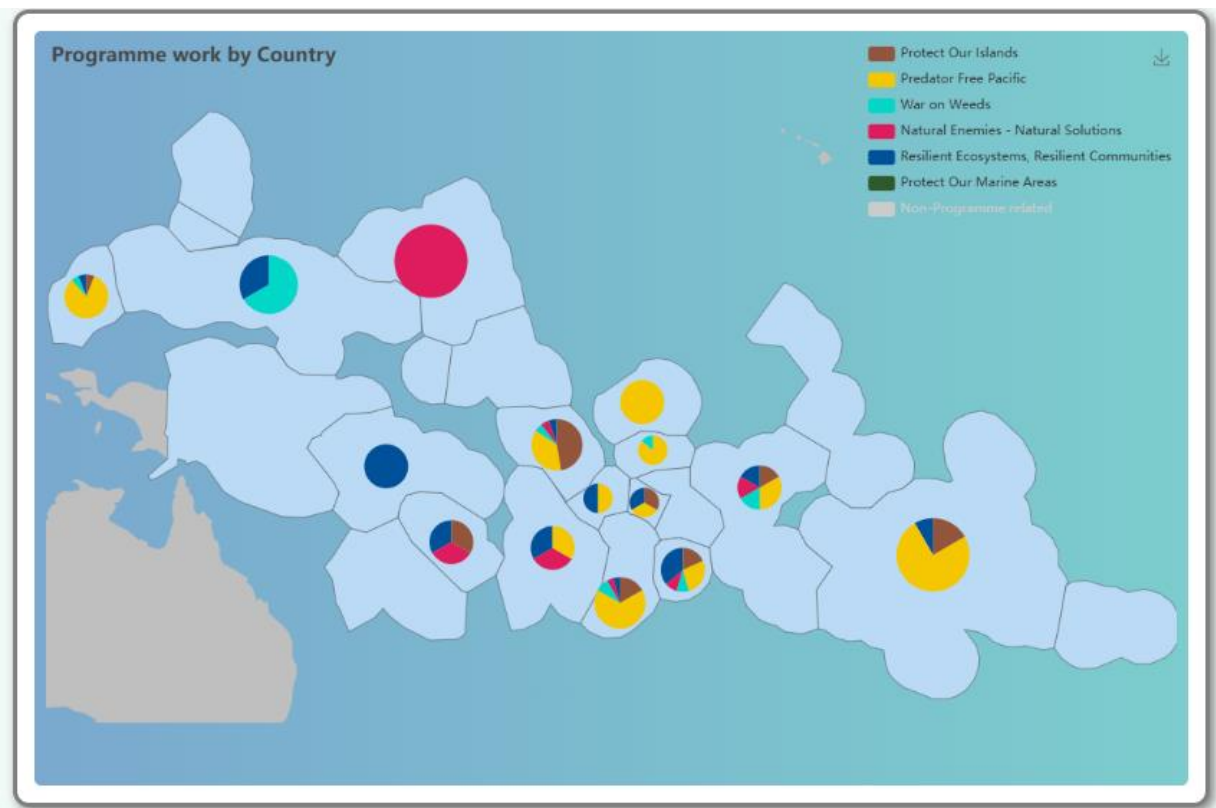
SPREP Home > Invasive Species | PRISMSS | Battler Resource Base

NAVIGATOR THE PREMIER COMPASS | Activity Workbench | Populate Indicator Responses | Reporting | Statistics | English | Français

Home

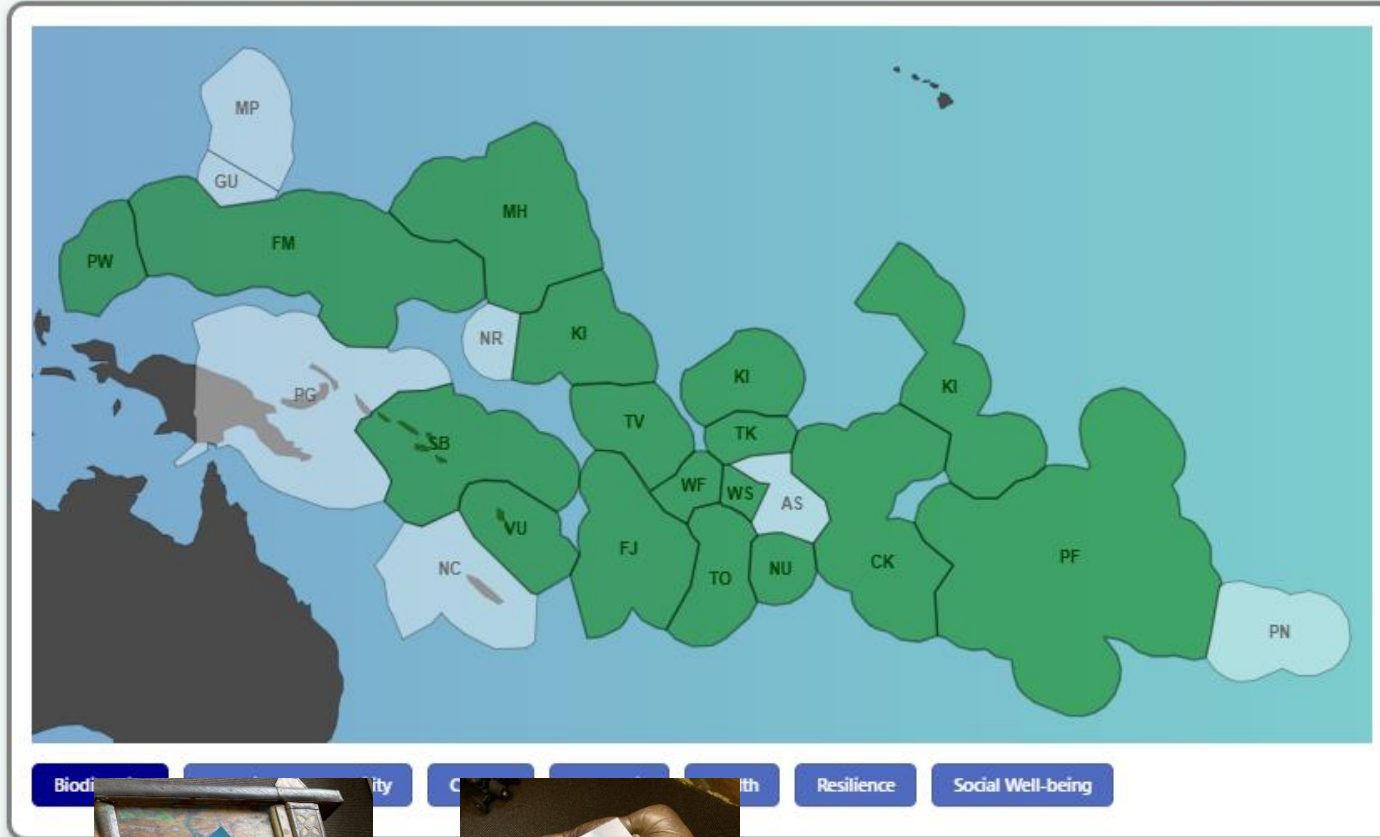
Statistics

165 Requests Received	37 Activities Completed	88 Activities In Progress
\$7,594,423 Value Of Completed Activities (USD)	\$36,224,890 Value Of Activities In Progress (USD)	



# Mainstreaming invasive species management for co-benefits

Activity Outcome by Country



# Mainstreaming invasive species management for co-benefits

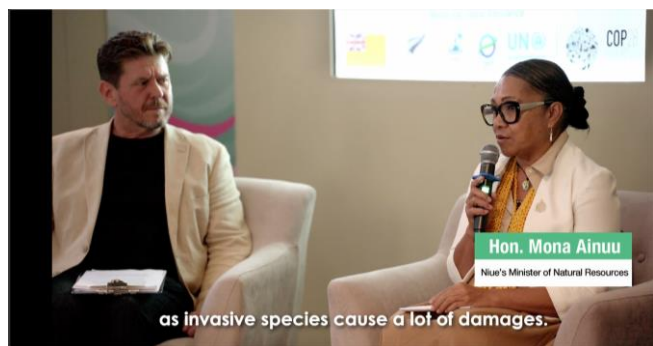


COP27 Panel discussion on Restoring Island Resilience



COP15 Global Environment Facility side-event

COP28 Niue and PRISMSS



COP29 Adaptation Fund, Tonga, Niue

COP30, Brazil, November 2025

# Battler Resource Base – storing and delivering knowledge

The screenshot shows the website's navigation and search interface. At the top, there are links for 'SPREP Home', 'Invasive Species', and 'SPREP Resources'. The main header includes the 'Battler Resource Base' logo and navigation links: 'BRB HOME', 'ABOUT', 'SEARCH', 'ONLINE RESOURCES', and 'CONTACT US'. A language selector is set to 'English'. Below the header is a search bar with the placeholder text 'e.g. Search by species common name, scientific name, country or other keyword.' and dropdown menus for 'Species', 'Country', 'Theme', and 'PRISMSS Prog.'. A 'Search the Catalogue' button is positioned below these filters.

The main content area is titled 'Pacific Invasive Species - Battler Series' and features a carousel of four featured publications:

- Introducing resources for Invasive Animal Suppression in the Pacific** (2024)
- Prioritise Widespread weeds to target with Natural Enemies** (2024)
- Feasibility Assessment for Suppressing Rats and Cats near Pangatu, Mangapiko** (2024)
- Clean Boats, Clean Ports - A Framework to Protect Pacific Island Countries** (2023)

Below the carousel is a 'Browse by Country' section with a map of the Pacific region. The map is color-coded by country and includes small icons representing different species or themes.

The cover features a photograph of a person sitting on a bench in a natural setting. The title is 'BUILD RESILIENT ECOSYSTEMS AND COMMUNITIES BY MANAGING INVASIVE SPECIES IN HIGH-PRIORITY SITES'. Logos for SPREP, UN Environment Programme, gef, and PRISMSS are displayed at the bottom.

The cover features a photograph of two people walking through a field. The title is 'MANAGE LOW-INCIDENCE PRIORITY WEEDS TO CONSERVE PACIFIC BIODIVERSITY'. Logos for SPREP, UN Environment Programme, gef, and PRISMSS are displayed at the bottom.

This screenshot shows the content area of the website, organized into several sections:

- Featured Publications:** A grid of four publication covers, including 'Introducing resources for Invasive Animal Suppression in the Pacific' (2024), 'PRISMSS Triennial Newsletter - December 2023', 'The Guiding Framework for Invasive Species Management in the Pacific' (2023), and 'PRISMSS Restoring Island Excellence Event - Summary' (2023).
- Related Online Resources:** Four circular icons representing: 'THE REGIONAL BIOSECURITY INFORMATION FACILITY', 'PACIFIC ISLAND ECOSYSTEMS AT RISK (PIER)', 'LITTLE FIRE ANTS', and 'EARLY DETECTION AND RAPID RESPONSE (EDRR) TOOLKIT'. A 'View more' link is present.
- Recently Added:** A grid of four document thumbnails, including 'PRISMSS Triennial Newsletter December 2024', 'Additions to the vascular plant flora of the Kingdom of Tonga', 'New records for the flora of Niue: *Crepidomanes*, *Antrodialean* (*C. Praelii*)', and 'Ethnobotany of Tokelau: The Plants, Their Tokelau Names, and Their Uses' (2025). A 'View more' link is present.
- Featured Videos:** Two video thumbnails: 'COP28 Panel 29 JAN' (COP28 PRISMSS Side Event - Restoring Island Excellence) and 'New Invasive Species Management' (Invasive Species Management in Niue). A 'View more' link is present.

The footer contains a 'Battler Resource Base' logo, 'Quick links' (SPREP Home, Invasive Species Home, PILN SearchBox, PRISMSS Newsletter), and 'Contact Us' information (+852 21026, sprep@sprep.org, and a link to subscribe to the PILN List).

**NENS OPTIONS FOR PACIFIC WEEDS**

**PIAT PACIFIC INVASIVE ANT TOOLKIT (PIAT)**

**PACIFIC BIODIVERSITY INFORMATION FACILITY (PBIF)**

**INVASIVE SPECIES SPECIALIST GROUP (ISSG) DATABASE**



# The Development of Regional Monitoring

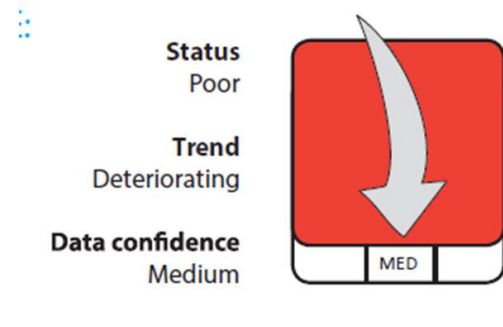
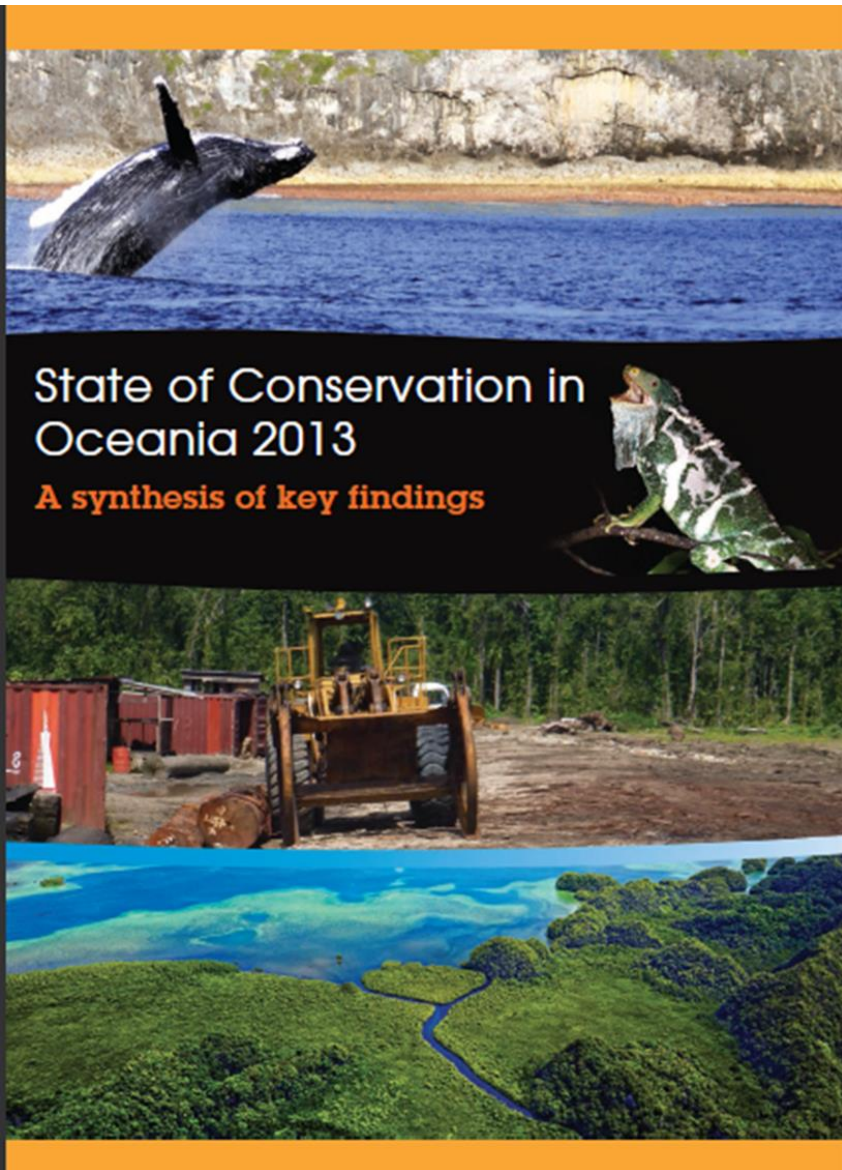
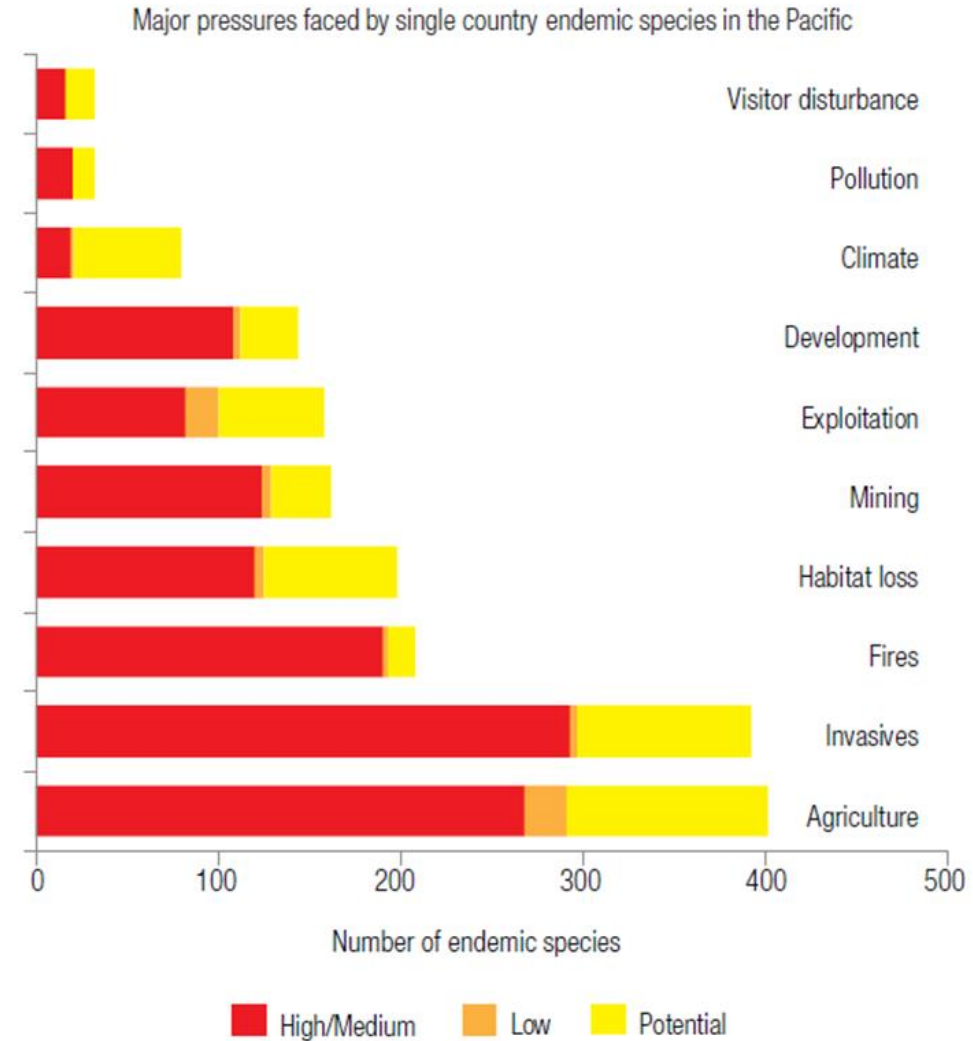
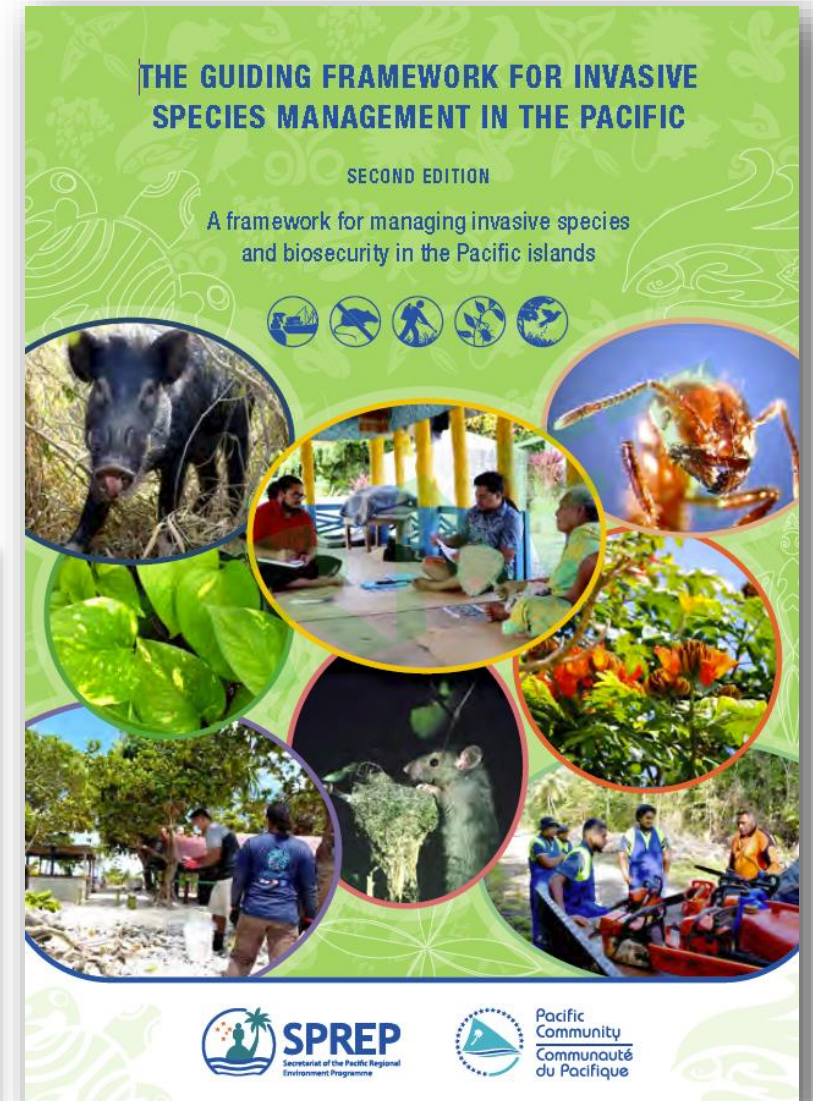
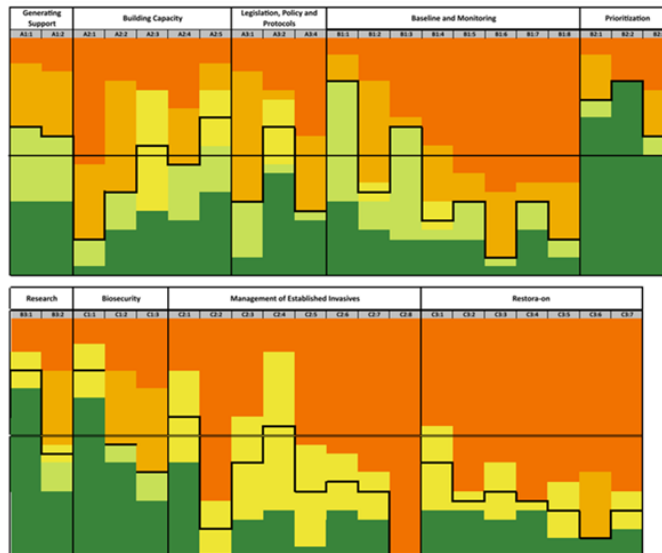
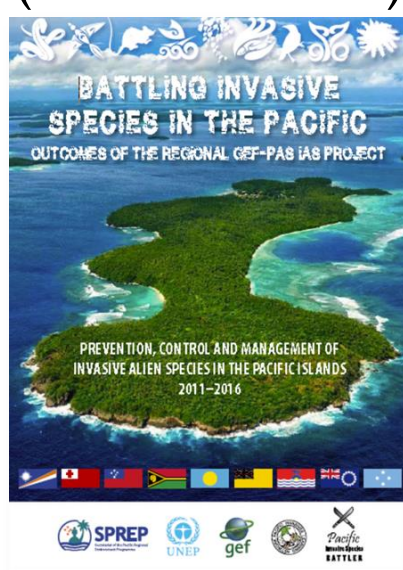


Figure P6.4 Nature and extent of various pressures on all extant Pacific single-country endemic species



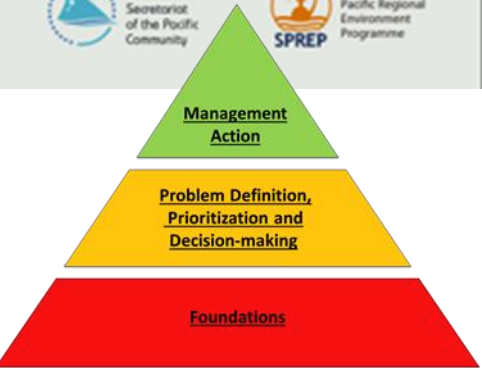
1. The guiding document since 2009
2. Has informed project formation and identified both national and regional gaps
3. Is the basis of the Pacific Invasive Species Indicators (PISI)
4. Reviewed in 2021-22
5. Endorsed in 2023 (SPREP Members), 2025 (SPC Members)



# Guidelines for Invasive Species Management in the Pacific



A Pacific strategy for managing pests, weeds and other invasive species



## Pacific Invasive Species Guidelines Reporting - 2016

From the questions below select the answer that best represents your country's work on invasive species management for the 2016 year. You can either highlight or change the colour of font to show your answer.

Please return your completed questionnaire to Natasha Doherty

Thank you for your cooperation and assistance.

### Objectives and Classifications

#### A Foundations

##### 1 Generating Support

A1.1 Greater awareness is created at the school, community and political levels

None	0
Awareness programme is active in schools or community or at the political level	1
Awareness programmes are active in 2 target areas (schools or community or at the political level)	2
Awareness programmes are active in all target areas	3
A1.2 Awareness results in behaviour change	
None	0



By 2020, invasive alien species and pathways are identified and prioritized, priority species are controlled or eradicated, and measures are in place to manage pathways to prevent their introduction and establishment.

Generating Support		Building Capacity					Legislation, Policy and Protocols		
A1:1	A1:2	A2:1	A2:2	A2:3	A2:4	A2:5	A3:1	A3:2	A3:4
AWARENESS	BEST PRACTICE	PLANNING	ISCM	COORDINATION	WORKFORCE	LEGISLATION	APPROVAL	WORK	

Baseline and Monitoring								Prioritization			Research	
B1:1	B1:2	B1:3	B1:4	B1:5	B1:6	B1:7	B1:8	B2:1	B2:2	B2:3	B3:1	B3:2
TERRESTRIAL				MARINE								
SPECIES	% YEAR	SITES	% YEAR					SPECIES	PATHWAYS	SITES	INFO ACCESS	BPP IDENTIFY

Biosecurity			Management of Established invasives								Restoration						
C1:1	C1:2	C1:3	C2:1	C2:2	C2:3	C2:4	C2:5	C2:6	C2:7	C2:8	C3:1	C3:2	C3:3	C3:4	C3:5	C3:6	C3:7
ENVIRONMENTAL	INTEGRATION	PLANTS	PLANTS	PLANTS	ANIMAL	ANIMAL	RAT	MARINE	MARINE		RISKS	HR PLAN	HR PLAN	HR PLAN	PLANTS	TO DATE	SPECIES



## INVASIVE ALIEN SPECIES PREVENTED AND CONTROLLED

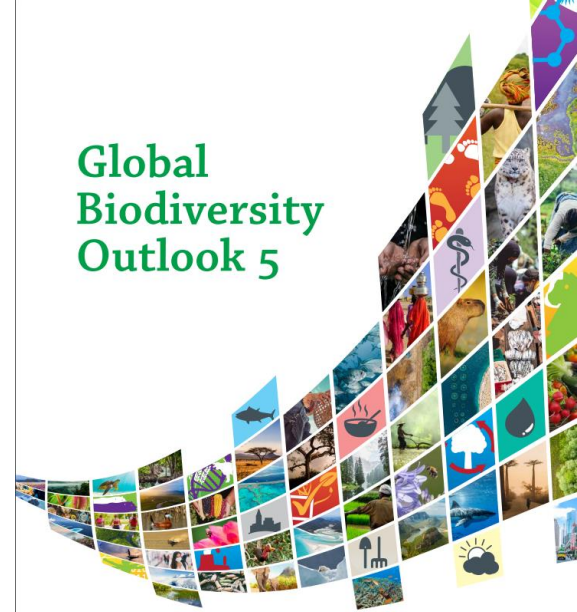
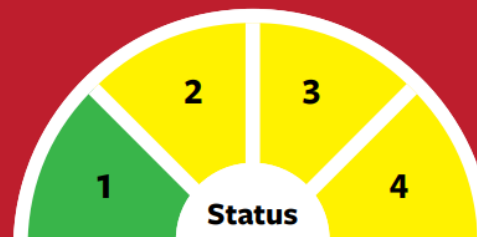
By 2020, invasive alien species and pathways are identified and prioritized, priority species are controlled or eradicated and measures are in place to manage pathways to prevent their introduction and establishment.

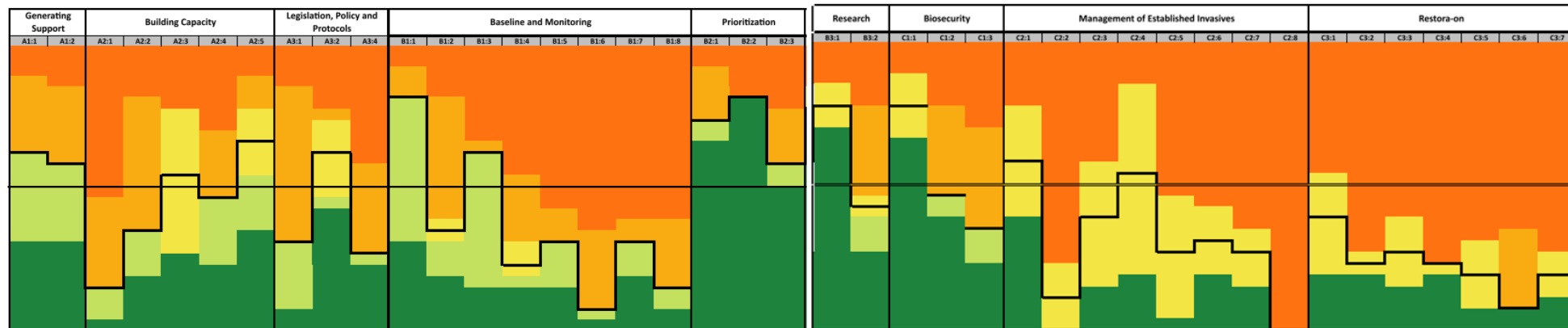
### Summary of target achievement

Good progress has been made during the past decade on identifying and prioritizing invasive alien species in terms of the risk they present, as well as in the feasibility of managing them. Successful programmes to eradicate invasive alien species, especially invasive mammals on islands, have benefited native species. However, these successes represent only a small proportion of all occurrences of invasive species. There is no evidence of a slowing down in the number of new introductions of alien species. **The target has been partially achieved** (*medium confidence*).<sup>1</sup>

#### TARGET ELEMENTS

1. Invasive alien species identified and prioritized
2. Pathways identified and prioritized
3. Priority species controlled or eradicated
4. Pathways managed to prevent introduction and establishment





## Guidelines Indicators first used in a publication

**THEME** Biodiversity

**INDICATOR** Invasive species under management or eradicated

**DEFINITION** % of identified priority invasive species eradicated from defined areas or under formal management

**PURPOSE** Indicates the effectiveness of invasive species eradication and management programs

**DESIRED OUTCOME** All or positive trend in the number of priority species under management or eradicated

**THEME** Biodiversity

**INDICATOR** Priority sites with invasive species managed

**DEFINITION** Number of priority sites with multi-invasive taxa management programmes

**PURPOSE** Indicates the effectiveness of invasive species management in protecting ecologically valuable sites/protected areas

**DESIRED OUTCOME** All sites or positive trend in the number of priority sites where invasive species are managed



**Status**  
Poor to fair

**Trend**  
Mixed

**Data confidence**  
High



Lantana (*Lantana camara*). © Posa Skelton



**Status**  
Poor

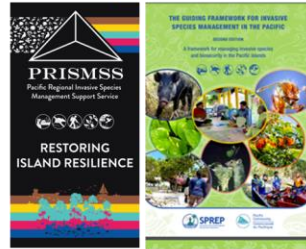
**Trend**  
Deteriorating

**Data confidence**  
Medium



Tava (*Pometia pinnata*) seedlings (regeneration). © Josef Pisi

# Implementing Target Six



8 Restoring ecosystem resilience in the Pacific region by reducing the impacts of invasive species in 5 Pacific SIDS  
**PIF approved by UNEP, currently with GEF Secretariat**



**Regional Cross-cutting Elements**  
**Pre-concept submitted, initial comments received**

Enhanced Direct Access Programme **Niue and Tonga concepts under development**



Pipeline development supported by:



### CELEBRATING OUR ACHIEVEMENTS

SPREP'S COMMITMENT TO THE INVASIVE SPECIES HONOLULU CHALLENGE

IN 2016 at the 16th World Conservation Congress in Seoul, SPREP made the following commitments:

1. To scale the volume of operational and priority projects by 2020. Projects include:
  - 1. UNFCCC OZP Project Regional Roll-out from 2016 to 2020 to support climate change adaptation (SPREP) Project a baseline
  - 2. UNFCCC OZP Project Regional Roll-out from 2016 to 2020 to support climate change adaptation (SPREP) Project a baseline
  - 3. UNFCCC OZP Project Regional Roll-out from 2016 to 2020 to support climate change adaptation (SPREP) Project a baseline
2. To secure the success of the SPREP Invasive Species Programme in the Pacific Region, and to ensure that the programme is sustainable and resilient. SPREP has developed the **PIF** which is delivering 5 regional programmes with partners.
  - 1. Pacific Regional Invasive Species Management Support Services
  - 2. Pacific Regional Invasive Species Management Support Services
  - 3. Pacific Regional Invasive Species Management Support Services
3. To ensure that the programme is sustainable and resilient. SPREP has developed the **PIF** which is delivering 5 regional programmes with partners.
  - 1. Pacific Regional Invasive Species Management Support Services
  - 2. Pacific Regional Invasive Species Management Support Services
  - 3. Pacific Regional Invasive Species Management Support Services

**12,500,000** Current PIF/ISD portfolio value

### RESTORING ISLAND RESILIENCE EVENT

PRISMSS Restoring Island Resilience Event Celebrating Pacific success toward scaling up the management of invasive species – a journey to restoring island resilience through PRISMSS

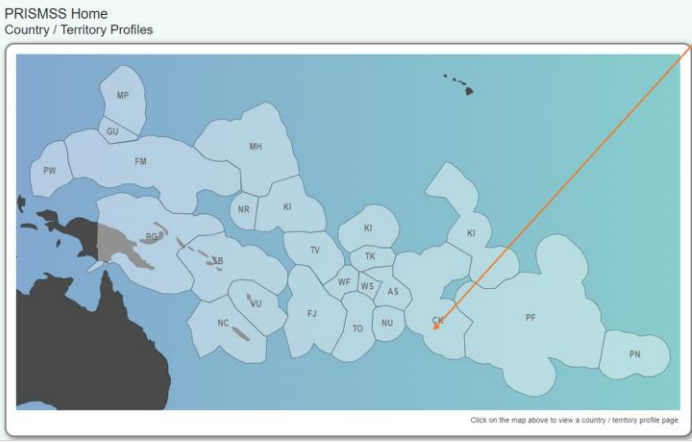
**CO-HOSTED BY TOFIGA FEPULEA'I**

A night of fun, entertainment, dinner and drinks.

7th September 19:00-21:00  
 Robert Loun Stevenson Museum, Apia

Please RSVP at: [prismsevent@sprep.org](http://prismsevent@sprep.org)

# Automating Target 6 responses



Country Profile: PF (French Polynesia)

**National Invasive Species Coordinator:**  
Name: Jason Robinson

**Invasive & Traditional Species Information**  
This country has been identified as the highest threat to the country's flora and invasive species are identified under the National Invasive Species Information System (NISIS). The NISIS is a national system for tracking and managing invasive species. The NISIS is a national system for tracking and managing invasive species. The NISIS is a national system for tracking and managing invasive species.

**Other Information**  
The country has been identified as the highest threat to the country's flora and invasive species are identified under the National Invasive Species Information System (NISIS). The NISIS is a national system for tracking and managing invasive species. The NISIS is a national system for tracking and managing invasive species.

Activity Name	Country	Service Category	Programme/Long-term Number	Project / Partner	Year (Start - End)	Reported Date	Activity Start - End	Status
Coastal Erosion	PF	Coastal Erosion	Coastal Erosion	Coastal Erosion	2018 - 2020	2020-10-01	2020-10-01	Active

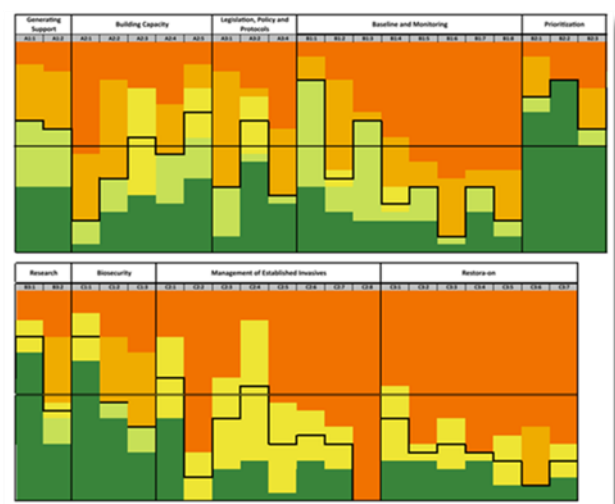
**Indicator Dashboard**  
 A: Assessment  
 B: Monitoring System

Code	Indicator	Response	
01.1	Assessment is conducted at the national, community and local levels.	Assessment programme on place in 3 stages and on a regular basis, primarily by the national level.	●
01.2	Assessment results in national change.	Management change implemented in two large areas.	●

# NAVIGATOR

THE PRISMSS COMPASS

Area	Indicator	Value	Color
A.1 - Invasive Species	A.1.1 - Invasive species present in the area...	...	Green
	A.1.2 - Invasive species management...	...	Yellow
	A.1.3 - Invasive species eradication...	...	Red
A.2 - Invasive Species	A.2.1 - Invasive species management...	...	Green
	A.2.2 - Invasive species eradication...	...	Yellow
	A.2.3 - Invasive species management...	...	Green
A.3 - Invasive Species	A.3.1 - Invasive species management...	...	Green
	A.3.2 - Invasive species eradication...	...	Yellow
	A.3.3 - Invasive species management...	...	Green



## THE GUIDING FRAMEWORK FOR INVASIVE SPECIES MANAGEMENT IN THE PACIFIC

SECOND EDITION

A framework for managing invasive species and biosecurity in the Pacific islands

SPREP  
Secretariat of the Pacific Regional Environment Programme

Pacific Community  
Communauté du Pacifique

## Kunming - Montreal GLOBAL BIODIVERSITY FRAMEWORK

GBF HOME // TARGET 6

### Target 6

#### Reduce the Introduction of Invasive Alien Species by 50% and Minimize Their Impact

*Eliminate, minimize, reduce and or mitigate the impacts of invasive alien species on biodiversity and ecosystem services by identifying and managing pathways of the introduction of alien species, preventing the introduction and establishment of priority invasive alien species, reducing the rates of introduction and establishment of other known or potential invasive alien species by at least 50 per cent, by 2030, eradicating or controlling invasive alien species especially in priority sites, such as islands.*

Following are the guidance notes prepared by the Secretariat for Target 6

- A. Why is this target important?
- B. Explanation of the target and its elements
- C. Links to other elements of the Kunming-Montreal Global Biodiversity Framework, and other frameworks and processes
- D. Guiding questions for national target-setting
- E. Indicators
- F. Relevant resources that can assist implementation



# TARGET 6: REDUCE THE INTRODUCTION OF INVASIVE ALIEN SPECIES BY 50% AND MINIMIZE THEIR IMPACT



*Eliminate, minimize, reduce and or mitigate the impacts of invasive alien species on biodiversity and ecosystem services by identifying and managing pathways of the introduction of alien species, preventing the introduction and establishment of priority invasive alien species, reducing the rates of introduction and establishment of other known or potential invasive alien species by at least 50 per cent, by 2030, eradicating or controlling invasive alien species especially in priority sites, such as islands.*

- 
- To accomplish this, the target identifies a set of elements that need to be considered:
    - **Pathways are identified and managed** – Pathways, are the means by which alien species are introduced to new environments.
    - **Preventing introduction and establishment** – Preventing the introduction of an invasive alien species is more cost effective than eradicating it once it has become established.
    - **Prioritization** – In most countries, there are likely to be several invasive alien species, multiple pathways of introduction and several sites that require protection.
    - **Eradicating or controlling** – Once an invasive alien species has been identified and prioritized, and priority sites defined, countries will need to determine management actions.

# GROUP EXERCISE - LINKING PACIFIC INVASIVE SPECIES INDICATORS (PISI INDICATORS) TO TARGET 6 ELEMENTS



- Review assigned PISI Indicators and discuss amongst the group which element each indicator best fits under
- Using sticky notes provided, assign each indicator to the agreed-upon element available throughout the room.
  - *NOTE: Some indicators may fit under two or more elements*

## TARGET 6 THEMES

Pathways are identified and managed

B2.2  
PATHWAYS  
IDENTIFIED

Prioritization

B2.1 PRIORITY  
INVASIVE  
SPECIES  
IDENTIFIED

B2.3 PRIORITY  
BIODIVERSITY  
SITES  
IDENTIFIED

Preventing introduction and establishment

C1.3  
INTERISLAND  
BIOSECURITY

C1.2 EARLY  
DETECTION  
AND RAPID  
RESPONSE

Eradicating or controlling

C3.1 NAME  
OF SITES  
UNDER  
RESTORATION

C2.1 LIST  
PRIORITY  
INVASIVE  
PLANT SPECIES  
UNDER  
MANAGEMENT

## PISI INDICATORS

Each group will attempt to report on the progress of the element based on the related indicator narratives.

## Preventing introduction and establishment

**C1.1 Environmental issues are incorporated into National Biosecurity**

National biosecurity incorporates identified environmental risks into their border control operations

**C1.2 Early Detection and Rapid Response**

Species detected and response actioned under the early detection and rapid response plan

**C1.3 Interisland Biosecurity**

Species detected and response action under inter-island biosecurity



## Preventing introduction and establishment

Key activities supported prevention introduction and establishment of IAS in country.

Species detected and response action under interisland biosecurity, national biosecurity incorporated identified environmental risk into the national border control operations and species detected and response was actioned under the EDRR plan

